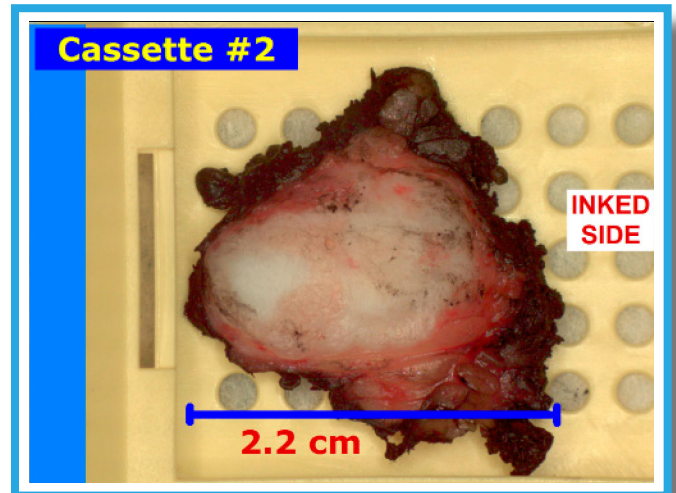
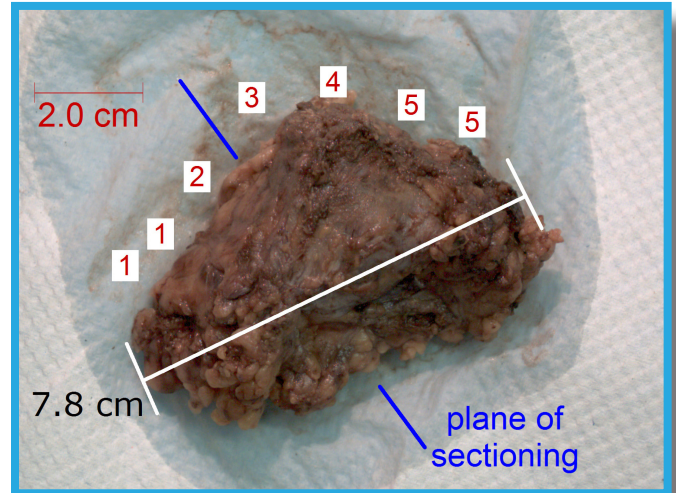


## Hands-Free Gross Imaging



- ✦ Mount within grossing station, over bench top, or above autopsy table
- ✦ Auto focus/Auto exposure on live preview
- ✦ Foot pedal control: one-tap field of view & camera settings
- ✦ Auto-label with case information & scale bar
- ✦ Easy touchscreen or mouse annotation & markup of image
- ✦ Quick, calibrated measurements on image
- ✦ PAXcamCONNECT™ live streaming for remote consultation
- ✦ Includes all *PAX-it!* tools for image management, annotation, processing, and sharing
- ✦ Capture directly to your case management software, to MS-Office® applications, to *PAX-it!* imaging software, or to file
- ✦ Compatible with PAXcam microscope imaging solutions for an integrated lab imaging protocol



## PAXcamHD Gross Imaging System Specifications and Benefits

- ✦ **Work inside the grossing station, over a grossing bench, or over an autopsy table** without moving the specimen to a separate camera stand
- ✦ **Compact form factor** in a hermetically sealed, smooth camera body that may be wiped down
- ✦ **HD1080p live preview** of the gross image area displayed on a standard computer monitor
- ✦ **30x zoom range** driven by quick and silent motors, yielding a wide range of fields of view (FOV) at a given working distance, for example:
  - ✦ 45" wide to less than 2" wide fields of view at 38" working distance
  - ✦ 27" wide to less than 1" wide fields of view at 22" working distance
- ✦ **Auto focus** at any zoom level, with manual focus override through computer controls – *no need to touch the camera*
- ✦ **Auto exposure** with exposure compensation settings and manual exposure override through computer controls – *no need to touch the camera*
- ✦ **30 user-defined, one-tap presets** to easily store and recall any combination of the following:
  - ✦ Specific zoom, exposure and contrast levels to accommodate different specimens' size, shape, and reflectivity
  - ✦ User-designed annotation and scale bar templates for instant application to captured images
  - ✦ Defined methods for saving images from the PAXcamHD camera, for example:
    - To a currently opened case folder in *PAX-it!*
    - To a *PAX-it!* folder based on Accession Number or other user-designated sorting method
    - To a Windows file, PowerPoint® presentation, or Outlook® email, in addition to a defined *PAX-it!* location
- ✦ **Foot pedal control** for switching between the stored camera / zoom presets and for image capture – *hands-free operation!*
- ✦ **Versatile, user-friendly software interface** for use with **Touch Screen** or traditional mouse controls
- ✦ **Capture directly to PAX-it! Software** and other convenient locations, including: MS-Office® applications (PowerPoint®, Outlook®, Word®), to file, your hospital application, and more!
- ✦ **Capture video clips** of gross specimen handling, including time-lapse sequences
- ✦ **Includes PAXcamCONNECT™ Live Streaming** to share PAXcamHD's live preview with multiple remote locations via LAN or the internet, for interactive telepathology and consultation regarding gross specimen prep and features
- ✦ **Includes PAX-it! software** to seamlessly capture images into a user-defined database archive, with **touch-friendly** markup tools, reporting tools, and more:
  - ✦ Draw lines, boxes, and circles on your image manually or with easy user-defined presets
  - ✦ Add pre-formatted textual phrases to your image with one touch
  - ✦ Add a calibrated scale bar or multiple scale bars to the image
  - ✦ Draw calibrated measurement lines with immediate readout in your choice of measurement units
  - ✦ Simple tap control to drop sequential labels (A,B,C... or 1,2,3...) for serial sections or cassette designations
  - ✦ Additional annotation and measurement tools
  - ✦ Image processing tools including HDR imaging, fusion of focal planes, stitching
  - ✦ Expandable software modules, including: image analysis, network site licensing, motorized stage control, and more
- ✦ **Supplemental ring light illumination** is available for setups where ambient light is insufficient
- ✦ **Optional camera mounts** are available, including flexible arms for mounting within a grossing station, and fixed or articulating arms for bench top installations

(Microsoft, Word, Windows, Office SBE, Outlook, Excel and PowerPoint are registered trademarks of Microsoft Corporation)

**MIS** MIS Worldwide Headquarters  
707 N. Iowa Avenue  
Villa Park, IL 60181 USA  
+1.630.279.4000 tel. +1.630.279.4050 fax.

**PAXcam™**  
www.paxcam.com

**PAX-it!**  
www.paxit.com